

WC-985 1D



Townhouse style apartment with garden in Sta Catalina



€ 2.950.000,00 €

Palma De Mallorca

4

3

ca. 242 m²

ca. 94 m²

Apartamento adosado con jardín en Sta Catalina

Wohnung im Stadthausstil mit Garten in Sta Catalina



bconnected[®]

WWW.BCONNECTEDMALLORCA.COM
PLAÇA ESPANYA 3, 07181 PORTALS NOUS, SPAIN
T.: +34 971 221 066
REALESTATE@BCONNECTEDMALLORCA.COM

We reserve the right to change prices without prior notice
Nos reservamos el derecho a cambiar los precios sin previo aviso.
Wir reservieren uns das Recht die Preise zu verändern ohne vorherige Nachricht.

Townhouse style apartment with garden in Sta Catalina

Introducing our chic townhouse-style apartments, spanning two or three floors with the luxury of direct, private parking for 1 or 2 cars.

Discover your dream residence just moments from the vibrant energy of Santa Catalina and the beauty of Palma's Paseo Marítimo. This prime location is perfect for leisurely walks, bike rides, and indulging in the finest restaurants and nightlife. Presenting a newly built project featuring four boutique residential developments.

The beautiful outdoor pool area showcases fantastic views of the dreamy Palma harbour and features cozy lounge areas with fire pits, making it an ideal spot for relaxation, socializing, and enjoying the evening sky.

Surrounded by the city's cultural riches, this development offers an extensive program of unrivaled amenities that ensure a rich and varied lifestyle inspired by the idyllic island setting.

Amenities include a reception, pool & solarium, spa & wellness, community terraces & gardens, home cinema, fitness center, club house & wine cellar, golf simulator, car wash station, electric car charger, and 24-hour security.

Features include PV windows installed in all units, central cooling/heating, and geothermal energy supply. Experience the perfect blend of modern luxury and natural beauty in a location that offers endless opportunities for recreation and relaxation.

Welcome to your new home at the heart of Palma.

Apartamento adosado con jardín en Sta Catalina

Presentamos nuestros elegantes apartamentos adosados, de dos o tres plantas, con el lujo de disponer de aparcamiento privado directo para 1 ó 2 coches.

Descubra la residencia de sus sueños a pocos minutos de la vibrante energía de Santa Catalina y la belleza del Paseo Marítimo de Palma. Esta ubicación privilegiada es perfecta para pasear, montar en bicicleta y disfrutar de los mejores restaurantes y de la vida nocturna. Presentamos un proyecto de nueva construcción con cuatro urbanizaciones boutique.

La hermosa zona de la piscina al aire libre ofrece fantásticas vistas del puerto de Palma de ensueño y cuenta con acogedoras zonas de estar con hogueras, por lo que es un lugar ideal para relajarse, socializar y disfrutar del cielo nocturno.

Rodeado de la riqueza cultural de la ciudad, este complejo ofrece un amplio programa de servicios inigualables que garantizan un estilo de vida rico y variado inspirado en el idílico entorno de la isla.

Los servicios incluyen una recepción, piscina y solarium, spa y bienestar, terrazas y jardines comunitarios, cine en casa, gimnasio, casa club y bodega, simulador de golf, estación de lavado de coches, cargador de coches eléctricos y seguridad las 24 horas.

Las características incluyen ventanas fotovoltaicas instaladas en todas las unidades, refrigeración / calefacción central y suministro de energía geotérmica. Experimente la mezcla perfecta de lujo moderno y belleza natural en un lugar que ofrece infinitas oportunidades para la recreación y la relajación.

Bienvenido a su nuevo hogar en el corazón de Palma.

Wohnung im Stadthausstil mit Garten in Sta Catalina

Wir stellen Ihnen unsere schicken Apartments im Stadthausstil vor, die sich über zwei oder drei Etagen erstrecken und den Luxus eines direkten Privatparkplatzes für 1 oder 2 Autos bieten.

Entdecken Sie Ihre Traumwohnung nur wenige Augenblicke von der pulsierenden Energie von Santa Catalina und der Schönheit von Palmas Paseo Maritimo entfernt. Diese erstklassige Lage eignet sich perfekt für gemütliche Spaziergänge, Fahrradtouren und zum Genießen der besten Restaurants und des Nachtlebens. Wir präsentieren ein neu gebautes Projekt mit vier Boutique-Wohnanlagen.

Der schöne Außenpoolbereich bietet einen fantastischen Blick auf den verträumten Hafen von Palma und verfügt über gemütliche Lounge-Bereiche mit Feuerstellen - ein idealer Ort, um zu entspannen, Kontakte zu knüpfen und den Abendhimmel zu genießen.

Umgeben von den kulturellen Reichtümern der Stadt bietet diese Wohnanlage ein umfangreiches Programm an unvergleichlichen Annehmlichkeiten, die einen reichen und abwechslungsreichen Lebensstil garantieren, der von der idyllischen Inselumgebung inspiriert ist. Zu den Annehmlichkeiten gehören eine Rezeption, Pool und Solarium, Spa und Wellness, Gemeinschaftsterrassen und -gärten, ein Heimkino, ein Fitnesscenter, ein Clubhaus und ein Weinkeller, ein Golfsimulator, eine Autowaschanlage, eine Ladestation für Elektroautos und ein 24-Stunden-Sicherheitsdienst.

Zur Ausstattung gehören PV-Fenster in allen Einheiten, zentrale Kühlung/Heizung und geothermische Energieversorgung. Erleben Sie die perfekte Mischung aus modernem Luxus und natürlicher Schönheit an einem Ort, der unendlich viele Möglichkeiten zur Erholung und Entspannung bietet.

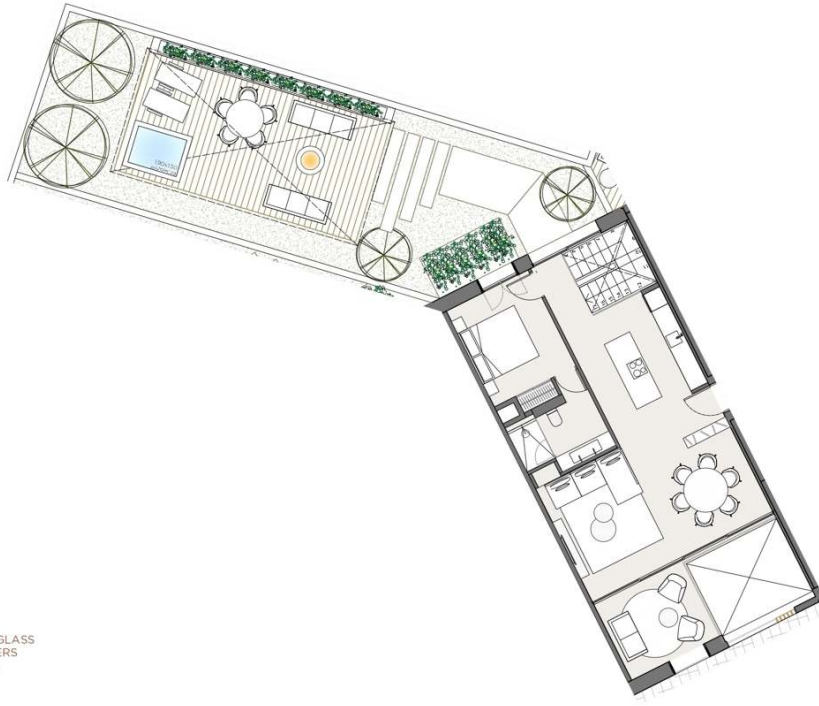
Willkommen in Ihrem neuen Zuhause im Herzen von Palma.

WC-985 1D



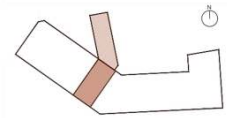
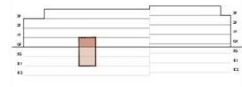
bconnected[®]

WC-985 1D

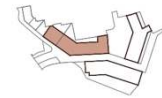


KITCHEN
WARDROBES
SMART CONTROL
SOLAR CONTROL GLASS
EXTERIOR SHUTTERS
COMMUNITY POOL
COMMUNITY SPA
COMMUNITY GYM
AC/HEATING

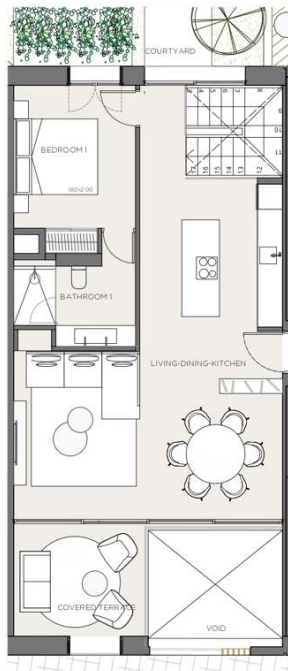
#1100 DATE: 17-05-24
*This document is informative. It has not contractual value until the structure and installations are completely defined.
**THIS DOCUMENT INCLUDING USABLE AREAS AND GROSS FLOOR AREAS IS ONLY TEMPORARY AND NOT FINAL DUE TO HUNGARIAN



1D - APARTMENT-	
INDOOR USABLE FLOOR AREA	184.50
INDOOR GROSS FLOOR AREA	242.84
OUTDOOR GROSS FLOOR AREA	94.31
TOTAL GROSS FLOOR AREA	337.15
GFA + COMMON AREAS	429.77

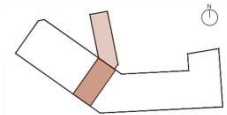
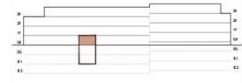


APARTMENT **1D**



KITCHEN
WARDROBES
SMART CONTROL
SOLAR CONTROL GLASS
EXTERIOR SHUTTERS
COMMUNITY POOL
COMMUNITY SPA
COMMUNITY GYM
AC/HEATING

#175 DATE: 17-05-24
*This document is informative. It has not contractual value until the structure and installations are completely defined.
**THIS DOCUMENT INCLUDING USABLE AREAS AND GROSS FLOOR AREAS IS ONLY TEMPORARY AND NOT FINAL DUE TO HUNGARIAN



1D - APARTMENT-	
INDOOR USABLE FLOOR AREA	184.50
INDOOR GROSS FLOOR AREA	242.84
OUTDOOR GROSS FLOOR AREA	94.31
TOTAL GROSS FLOOR AREA	337.15
GFA + COMMON AREAS	429.77

1D - USABLE FLOOR AREA-	
ROOM	SURFACE
GROUND FLOOR	
LIVING-DINING-KITCHEN	42.43
BEDROOM1	10.60
BATHROOM1	5.83
COVERED TERRACE	8.53
COURTYARD	88.19



APARTMENT **1D**



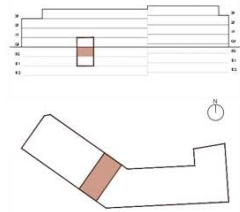
bconnected[®]

WC-985 1D



KITCHEN
WARDROBES
SMART CONTROL
SOLAR CONTROL GLASS
EXTERIOR SHUTTERS
COMMUNITY POOL
COMMUNITY SPA
COMMUNITY GYM
AC/HEATING

0m 1m 2m 3m 4m
1/75 DATE: 17-05-24
*The document is informative, it has not contractual value until the structure and installations are completely defined.
**THIS DOCUMENT INCLUDING USABLE AREAS AND GROSS FLOOR AREAS IS ONLY TEMPORARY AND NOT FINAL DUE TO HUNGARY

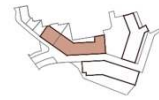


1D - APARTMENT-

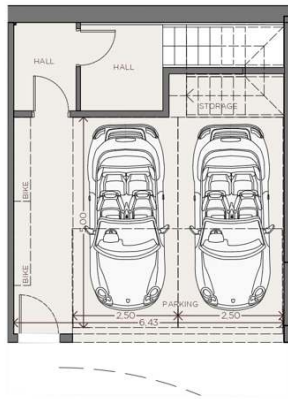
INDOOR USABLE FLOOR AREA	184.50
INDOOR GROSS FLOOR AREA	242.84
OUTDOOR GROSS FLOOR AREA	94.31
TOTAL GROSS FLOOR AREA	337.15
GFA + COMMON AREAS	429.77

1D - USABLE FLOOR AREA-

ROOM	SURFACE
SEMI GROUND FLOOR	
LIVING ROOM	17.45
BEDROOM 1	12.11
BATHROOM 2	4.53
BEDROOM 3	16.50
BATHROOM 3	9.77
CLOSET	4.96
COVERED PATIO	65.9

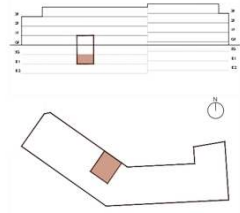


APARTMENT **1D**



KITCHEN
WARDROBES
SMART CONTROL
SOLAR CONTROL GLASS
EXTERIOR SHUTTERS
COMMUNITY POOL
COMMUNITY SPA
COMMUNITY GYM
AC/HEATING

0m 1m 2m 3m 4m
1/75 DATE: 17-05-24
*The document is informative, it has not contractual value until the structure and installations are completely defined.
**THIS DOCUMENT INCLUDING USABLE AREAS AND GROSS FLOOR AREAS IS ONLY TEMPORARY AND NOT FINAL DUE TO HUNGARY

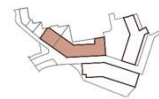


1D - APARTMENT-

INDOOR USABLE FLOOR AREA	184.50
INDOOR GROSS FLOOR AREA	242.84
OUTDOOR GROSS FLOOR AREA	94.31
TOTAL GROSS FLOOR AREA	337.15
GFA + COMMON AREAS	429.77

1D - USABLE FLOOR AREA-

ROOM	SURFACE
BASEMENT FLOOR -1	
HALL	4.02
HALL	3.15
PARKING	33.25
STORAGE ROOM	2.79



APARTMENT **1D**



bconnected[®]

COME VISIT US!



BCONNECTED HEADQUARTER

Plaça Espanya 3, 07181 Portals Nous, Calvia

+34 971 221 066 / realestate@bconnectedmallorca.com

www.bconnectedmallorca.com



bconnected®